



ASR Consulting Services

TCG PREDICTS ALKALI SILICA REACTIONS AND DESIGNS MITIGATION FOR NEW AND EXISTING CONSTRUCTION.

www.tourneyconsulting.com

TCG provides engineering and laboratory services to help our clients understand the risk of ASR in new construction or with existing facilities and pavements. ASR is a growing problem in the concrete industry due to many situations developing with time:

- Good sources of non-reactive aggregates are becoming limited in many regions.
- Cement alkalinity has been increasing by as much as 200% over the last 10 years.
- New deicing chemicals have aggravated ASR in highway and airport pavements.
- Better forensic engineering has identified ASR where it was unidentified in the past.
- Longer service life expectations allow slow developing ASR damage to become relevant.

Owners, agencies, engineering firms, concrete producers, and contractors may use TCG expertise for concrete mixture optimization and laboratory investigations to address ASR in new construction. We consider available cement, pozzolan, fly ash, admixture, and other protection systems to meet our clients' performance and cost objectives. TCG provides condition assessment services to identify ASR activity in existing structures and will recommend appropriate mitigation options.



Parking



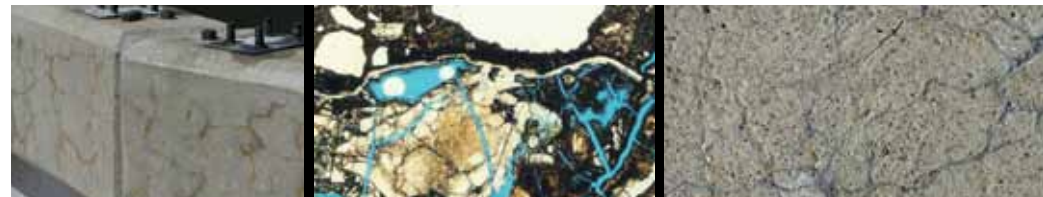
Marine



Transportation



Buildings



Engineering expertise and concrete results with TCG!

Standard TCG Laboratory Services:

- ASTM 1260 (Aggregate assessment in mortar bars)
- ASTM C1567 (Mix design or mitigation assessment in mortar bars)
- ASTM C1293 (Concrete Prism Test)
- FAA Forensic & Field Services – AC No: 150/5380-8
- Petrographic Analysis
- Lithium Content Analysis and Profiling
- Construction Quality Assurance Testing
- Other Chemical Analysis Available

3401 Midlink Drive
 Kalamazoo, MI 49048
 Toll free: 866.584.4824
 Office/Laboratory: 269.384.9980
 Fax: 269.384.9981

**Superior Engineering Services...
 ...Superior Concrete Results!**

Specialized Durability Analysis and Design

